



# JIM BOOTH ART GALLERY

Jim Booth, a self-taught artist, became widely known for his life-like realism painting many scenes from the Low Country and Charleston, SC area. Born in Charleston, SC in 1945, Jim drew and painted as long as he could remember. While majoring in architecture at Clemson University, he decided that art was where his future lay but in order to fulfill his military obligations, he left school and joined the Marine Corps for four years of service - including combat in Vietnam. The war cemented Jim's decision to pursue art so he returned home determined to begin a career as a painter. In 1970 Jim started painting professionally for Ambassador Graphics. In 1977 Jim



Jim's Marine Corps portrait  
(1969-1970)

opened his own gallery, Four Winds Studio Gallery, which he later renamed Jim Booth Art Gallery, Inc. Jim's most famous painting entitled "The Storm" depicts the Charleston Battery during Hurricane Hugo. Over the years Jim's offerings expanded from original paintings, to lithographs paper prints, and then to canvas prints. As of May 2018 Jim retired after 47 years in business with his retail show room & frame shop closing and the business becoming online focused. Jim sadly passed away in June 2021 leaving behind his artistic talent, his life full of stories, and his contagious laughter. Jim spent his final days at home taking in his favorite backyard views featured in "Lowcountry Sunset" and "Days End". After working side-by-side with Jim and managing his gallery for 20+ years, Jim's daughter, Diana Booth, now continues the business with a focus to uphold Jim's standards!

## GIVING BACK

Since 2022 Jim Booth Art Gallery has donated a total of \$65,925 to 8 different local charities and put 5 original paintings on display!

--**Original Paintings** --Jim wished for all his remaining original paintings to be sold for charity or donated for public enjoyment. Visit the "Original Paintings" section at JimBooth.com to learn which originals are available and where to view those on public display.

--**JimBooth.com Sales** - A portion of *EVERY* JimBooth.com sale is donated to various Charleston area charities. Our current charity partner: *Pimlico Ladies Club* to support their efforts making 125 comfort bags each month for the Shawn Jenkins MUSC Children's Hospital!

--**Environmental (ENV) Print Program** -- We occasionally donate gold seal, Limited Edition, ENV Prints to our charity partners. These are our most valuable prints and are only available through auctions at charitable events or via online auctions.

Learn more about the charities and groups we've supported at JimBooth.com:

- Edisto Open Land Trust
- Charleston Historic Foundation
- Boone Hall Foundation
- Charleston Water Keeper
- Wounded Nature Working Veterans
- Magnolia Gardens
- College of Charleston
- Nemours Foundation
- The Citadel
- Charleston Area Therapeutic Riding
- Blessed Sacrament School's Green Space Project
- Lowcountry Chapter of Farmers and Hunters Feeding the Hungry (FHH)
- Pimlico Ladies Club supporting the Shawn Jenkins MUSC Children's Hospital

## SHOP

- **JimBooth.com** (for shipping only) featuring all available inventory of 50+ images. *FREE gift wrap* and *FREE personalized cards* available for all online gift orders!

- **Patina Market Charleston** is where we stock a vendor booth for in-person shopping! Our "Booth booth" features 40+ of Jim's most popular images. Patina Market Charleston is located in our old gallery building at 1929 Maybank Hwy - James Island, SC 29412. The vendor mall offers a unique mix of antiques, home décor items, and gifts from over 40 vendors! Open Monday-Saturday 11am-5pm.



Jim in 1979 while painting "Morning Light"

## PORTFOLIO

Visit JimBooth.com for detailed information on each image including available print types, sizing, and pricing.

**Limited Edition Prints** are lithograph on paper reproductions of Jim Booth's original acrylic on canvas paintings. These reproductions are printed on a Ph neutral paper and have a pre-set edition size. Jim individually hand signed and hand numbered each print. Limited Edition Prints are available as Signed and Numbered Prints and Artists Proof Prints.

**Classic Edition Posters** are an open edition of posters released after the Limited Edition Prints sold out. They are the same quality, lithographs on paper, as the Limited Edition Prints. Classic Edition posters can continuously be reproduced and will not increase in value like the original Limited Edition Prints.



Jim in 2017 with an original painting by Hillary Lambert that he received for Christmas



**"Admirals Quarters A"**  
Limited Edition Print



**"Angel Oak"**  
Classic Edition Poster



**"Arthur Ravenel Bridge"**  
Classic Edition Poster



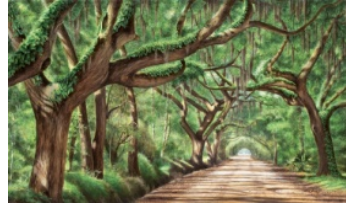
**"Battery Cannons"**  
Limited Edition Print



**"Beachcombers"**  
Limited Edition Print



**"Beachwalkers"**  
Limited Edition Print



**"Botany Bay Road"**  
Limited Edition Print



**"Carolina Legacy"**  
Limited Edition Print



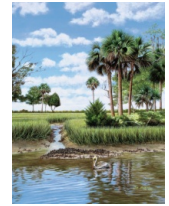
**"Charleston Defenses"**  
Limited Edition Print



**"Cooper River Diamonds"**  
Limited Edition Prints



**"Cotton Clipper"**  
Classic Edition Poster



**"Creekside"**  
Limited Edition Print



**"Daufuskie Island"**  
Classic Edition Poster



**"Days End"**  
Limited Edition Print



**"East Battery"**  
Limited Edition Print



**"Ebb Tide"**  
Limited Edition Print



**"Evening Flight"**  
Limited Edition Print



**"Evening Rainbow"**  
Limited Edition Print



**"Evening Tide"**  
Classic Edition Poster



**"Folly Pier"**  
Classic Edition Poster



**"Graceful Passage"**  
Limited Edition Print



**"Harbor Lights"**  
Classic Edition Poster



**"Island Girls"**  
Classic Edition Poster



**"Island Egret"**  
Limited Edition Print



**"Island Heron"**  
Limited Edition Print





**"King Street 1900's"**  
Classic Edition Poster



**"Marsh Buck"**  
Limited Edition Print



**"Night Watch"**  
Classic Edition Poster



**"Palmetto Islands"**  
Limited Edition Print



**"Palmetto Sunrise"**  
Classic Edition Poster



**"Palmetto Sunset"**  
Classic Edition Poster



**"Pineapple Fountain"**  
Limited Edition Print



**"Phantom Light"**  
Classic Edition Poster



**"Plantation Camellia I"**  
Limited Edition Print



**"Prospect Hill Plantation"**  
Limited Edition Print



**"Plantation Camellia II"**  
Limited Edition Print



**"Randolph Hall"**  
Limited Edition Print



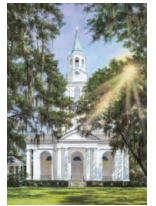
**"Reflections"**  
Classic Edition Poster



**"Running The Wind"**  
Limited Edition Print & Classic Edition Poster



**"Safe Harbor"**  
Limited Edition Print



**"Sea Island Glory"**  
Limited Edition Print



**"Sea Island Lagoon"**  
Limited Edition Print



**"Serenity"**  
Limited Edition Print



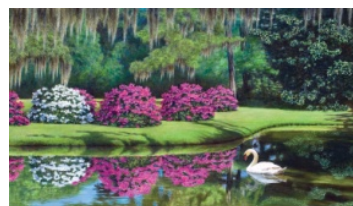
**"Shem Creek 1970's"**  
Limited Edition Print



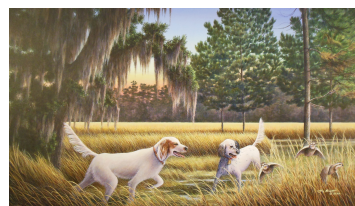
**"Shrimp Trawlers"**  
Limited Edition Print



**"South Battery II"**  
Classic Edition Poster



**"Southern Charm"**  
Limited Edition Print



**"Southern Covey Rise"**  
Limited Edition Print



**"Southern Magnolia"**  
Classic Edition Poster





**"Southern Splendor"**  
Classic Edition Poster



**"Storm Surge 1911"**  
Limited Edition Print



**"Surf's Up!!"**  
Limited Edition Print



**"The Bridges"**  
Classic Edition Poster



**"The Storm"**  
Classic Edition Poster



**"St Phillips Church"**  
Classic Edition Poster



**"Storm Warnings"**  
Classic Edition Poster

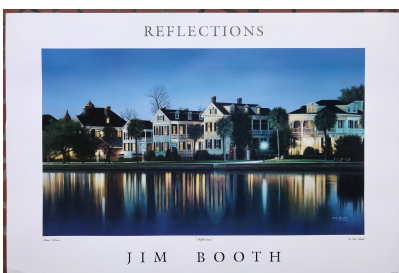


**"Silent Honor"**  
Limited Edition Print



**"White Point Gardens Gazebo"**  
Limited Edition Print

\*NOTE\* - all **Large** Classic Edition Posters have large text "poster writing" surrounding the image. Framing without a mat the paper fits a standard 24" x 36" frame - showing the poster writing. Using a 3" matting covers the large poster writing and make the finished piece look more like a print - still finishing to the standard 24" x 36" frame size. See examples...



Large Poster showing  
"poster writing" surrounding image



Large "poster writing"  
covered with 3" matting



Large Poster with 3" matting  
fitted in a 24" x 36" frame